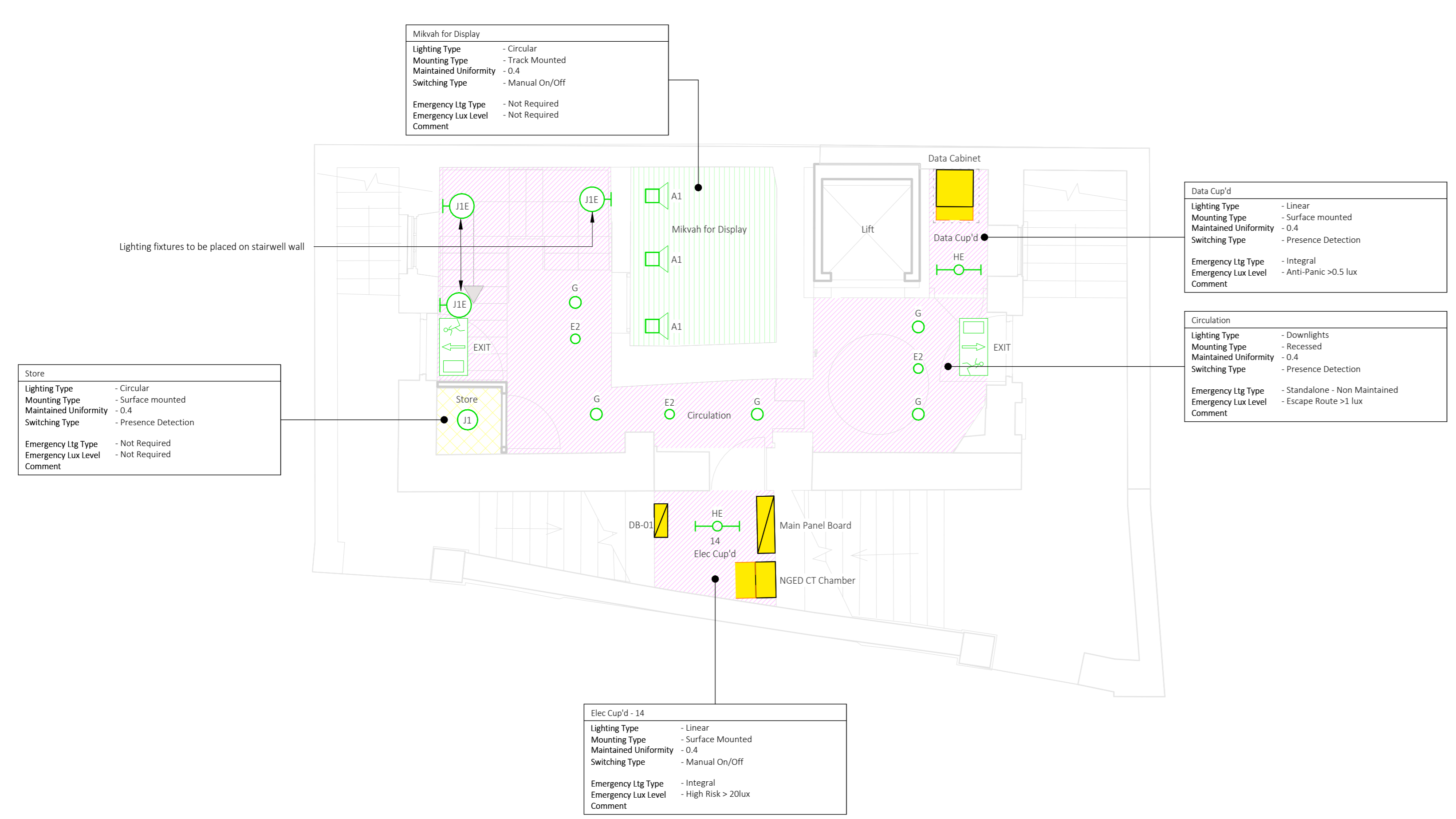


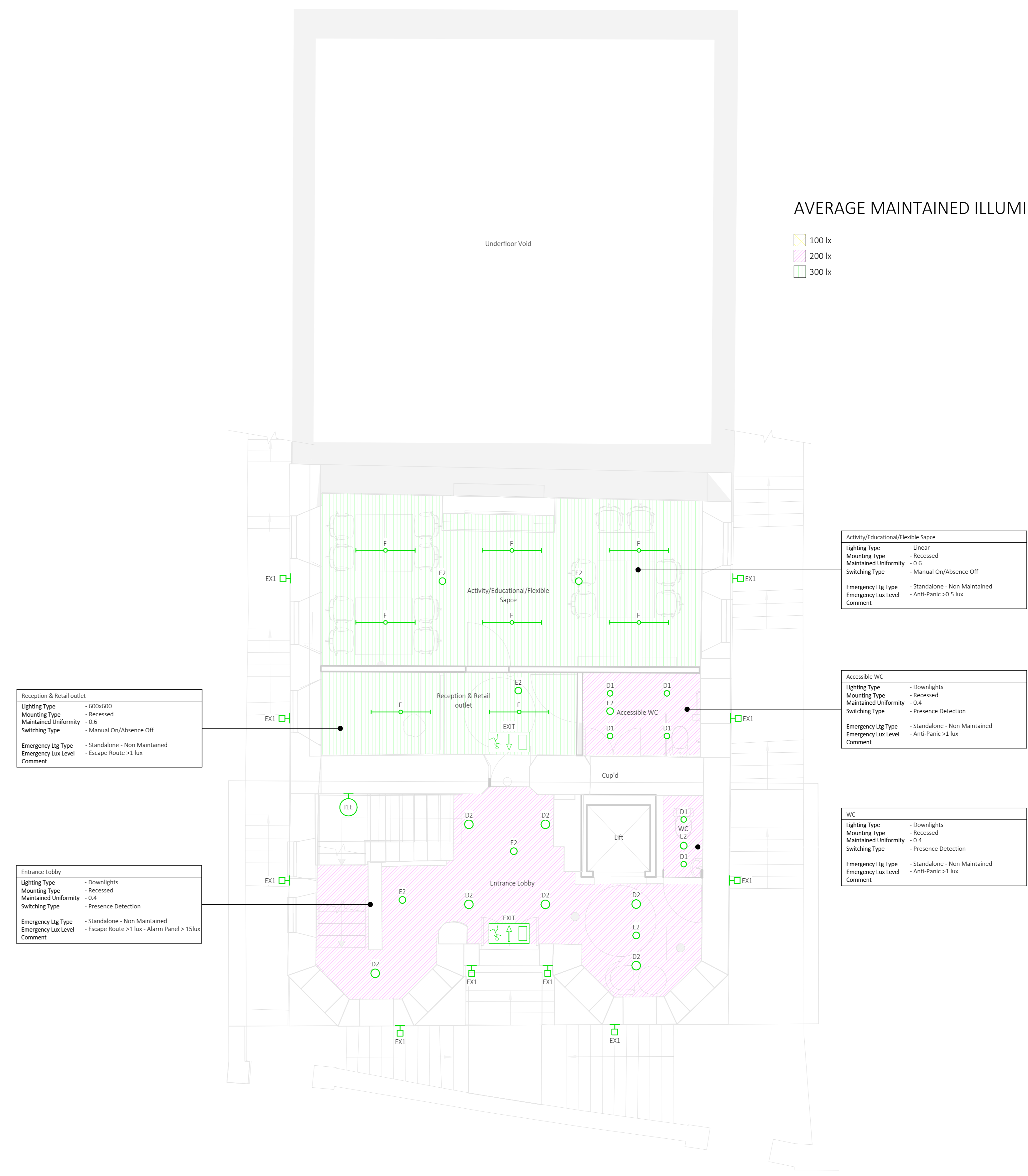
AVERAGE MAINTAINED ILLUMINANCE

- 100 lx
- 200 lx
- 300 lx

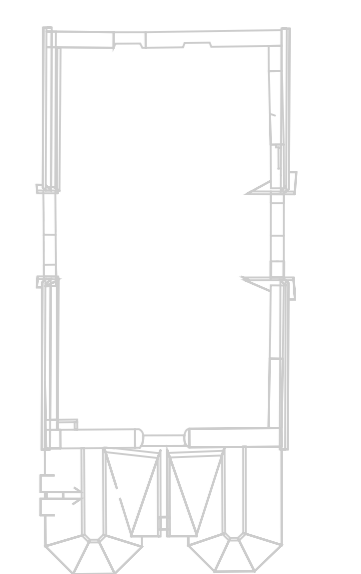


AVERAGE MAINTAINED ILLUMINANCE

- 100 lx
- 200 lx
- 300 lx



KEY PLAN



NOTES

1. All dimensions are to be checked on site before the commencement of works. Any discrepancies are to be reported to the Architect & Engineer for verification. Figured dimensions only are to be taken from this drawing.
 2. This drawing is to be read in conjunction with all relevant engineers' and service engineers' drawings and specifications. This drawing is copyright.
 3. Manual Switching associated with absence detection to be of a retractable type.
 4. All installations shall comply with the 18th Edition of the IET wiring regulations (BS7671) and any amendments.
 5. The contractor shall ensure that all luminaires method of fitting is compatible with the intended ceiling structure.
 6. Luminaires recessed in suspended ceilings shall be supported from the ceiling and the final connection between luminaires and 'feed' wiring system shall be via plug / socket and flexible cable.
 7. Lighting Levels to comply with BS 12464-1:2021 including all up to date amendments.
 8. Emergency lighting shall comply with BS 5266-1:2016 incorporating all up to date amendments and guidance notes.
- Note: For details of the types of Luminaires refer to the Luminaire Schedule.

REVISIONS

Rev.	Revision Description	Date	Drawn By	Checked	Approved By
P01	Suitable for Review and Comment	13/03/24	JAM		DF AH

Hydrock
3rd Floor, Wharston Place
13 Wharston St
Cardiff
CF10 1GS
t: +44(0)2920 023665
e: cardiff@hydrock.com

CLIENT

GWP Architect

PROJECT

Merthyr Synagogue

TITLE

Electrical Services
Lighting Layout
Lower Ground Floor & Ground Floor

HYDROCK PROJECT NO. 28464	SCALE @ A0 1 : 50
STATUS DESCRIPTION SUITABLE FOR REVIEW & COMMENT	STATUS S3
DRAWING NO. 2324-HYD-XX-XX-DR-E-2000	REVISION P01