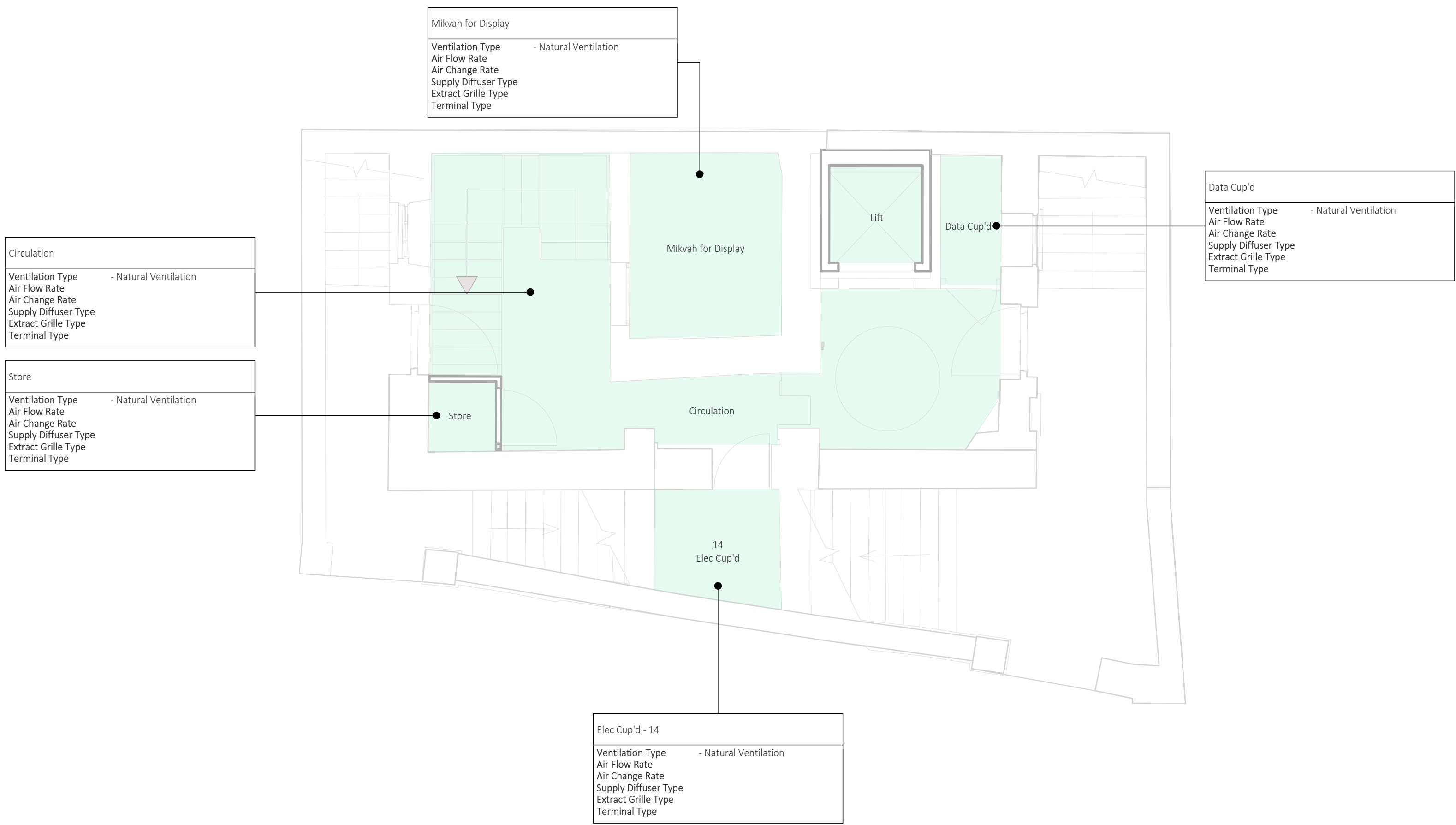


C:\Users\johndawkins\Documents\2324-HYD-XX-XX-ME-M-001_2.dwg:hydra\sheet1.rvt

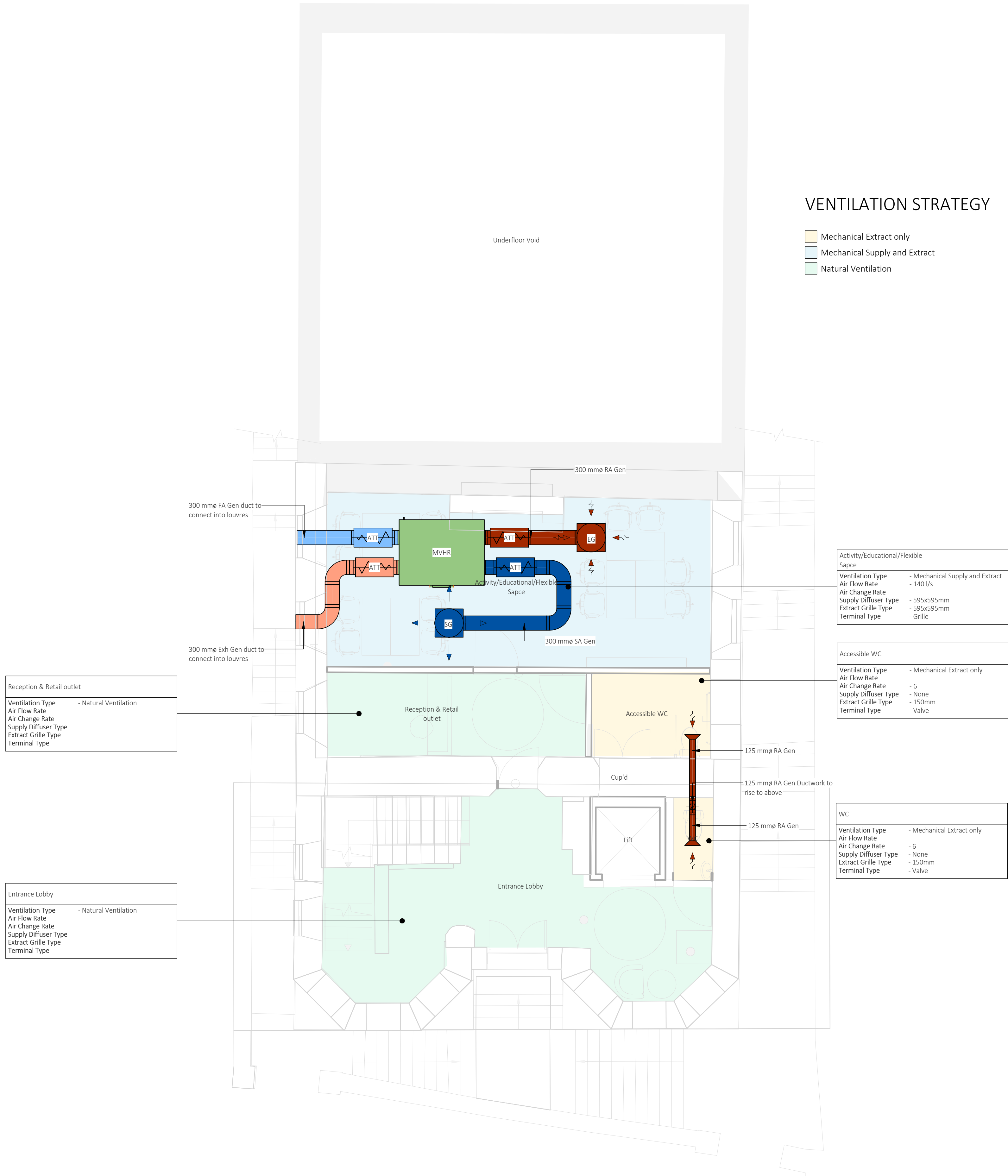
VENTILATION STRATEGY

Natural Ventilation

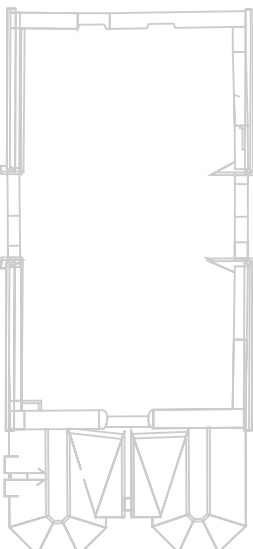


VENTILATION STRATEGY

Mechanical Extract only
Mechanical Supply and Extract
Natural Ventilation



KEY PLAN



NOTES

- All dimensions are to be checked on site before the commencement of works. Any discrepancies are to be reported to the Architect & Engineer for verification. Figure dimensions only are to be taken from this drawing.
- This drawing is to be read in conjunction with all relevant engineers' and service engineers' drawings and specifications. This drawing is copyright.
- General installation to comply with HVCA DW144.
- Access panels for inspection purposes shall be provided and installed in accordance with TR19.
- Ventilation installation to comply with BS 5588 : Part 9:1999.
- Attenuators to be selected by contractor upon confirmation of fan selections. The contractor shall ensure the attenuators selected meet the NIK criteria as specified in the relevant schedules.
- Fire / smoke dampers to be provided in association with the architect's fire strategy drawing. Access panels to be provided for access to reset and maintain damper as required.
- Fire dampers to incorporate external indicator fitted to the access (cassette) side of the damper casing giving visual indication of damper blade position.
- Flexible ductwork lengths shall not exceed 500mm and shall not be used for changes of direction.
- The responsibility for the support of the entire ductwork system and associated plant shall be that of the contractor.
- All ductwork and plenums to be fully insulated, unless stated otherwise within the specification.
- All dampers shall be of the opposed blade configuration.
- Final connections to grilles / diffusers to be made with acoustic flexible ductwork.
- Louvers to be fitted with insulated plenum boxes.
- Ducts to transform and connect to plenum boxes.
- VCDs shall be included on all final duct branches leading up to grilles / diffusers.
- For final louvre locations refer to Architectural layouts and elevations.
- All doors separating rooms with a flow differential are to be provided with means of suitable air transfer to ensure unimpeded door operation.

REVISIONS

PO1	Suitable for Review and Comment	13/03/24	AD	GH AH
Rev.	Revision Description	Date	Drawn By	Checked Approved By



3rd Floor, Wharton Place
13 Wharton St
Cardiff
CF10 1GS
t: +44(0)2920 023665
e: cardiff@hydrock.com

CLIENT

GWP Architect

PROJECT

Merthyr Synagogue

TITLE

Mechanical Services
Ventilation Layout
Lower Ground Floor & Ground Floor

HYDROCK PROJECT NO. 28464	SCALE @ AD 1 : 50	STATUS S3
STATUS DESCRIPTION SUITABLE FOR REVIEW & COMMENT	DRAWING NO. 2324-HYD-XX-XX-DR-M-3500	REVISION P01