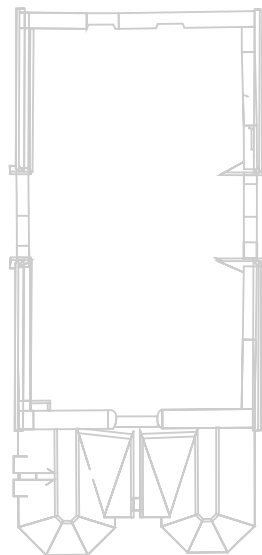
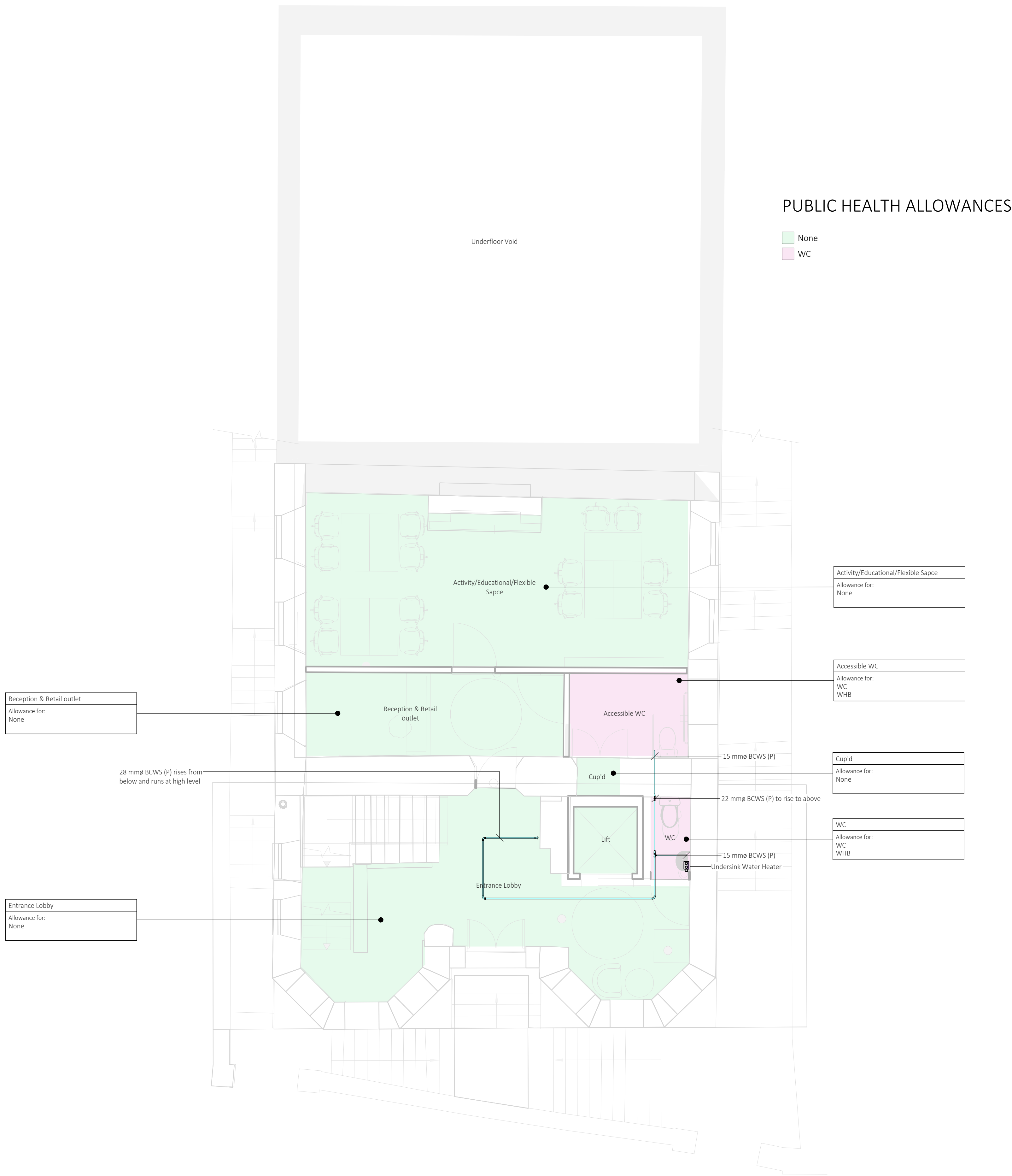
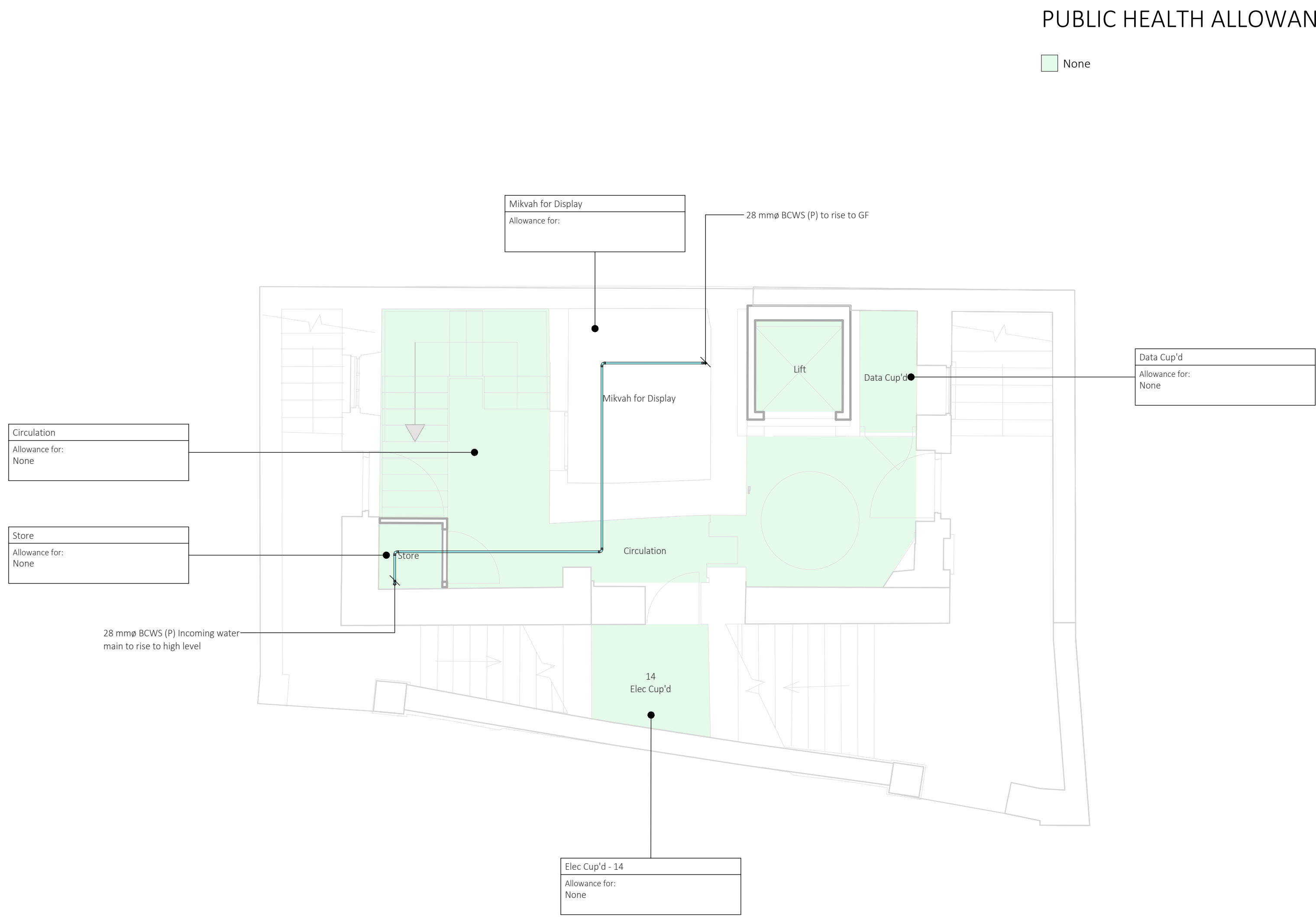


C:\Users\jacob\OneDrive\Documents\2324-HYD-XX-XX-ME-001_2_drawing-architectural.rvt



- NOTES
- All dimensions are to be checked on site before the commencement of works. Any discrepancies are to be reported to the Architect & Engineer for verification. Figure dimensions only are to be taken from this drawing.
 - This drawing is to be read in conjunction with all relevant engineers' and service engineers' drawings and specifications. This drawing is copyright.
 - All domestic services shall be installed in accordance with the recommendations of the Water Supply (Water Fittings) Regulations 1999, the WWS Water Regulations Guide, BS 8558, BS 7180, CIBSE TM13, and the Approved Code of Practice H0274 (Legionnaire Disease), CIBSE Public Health Engineering Guide G, the local water supply authority and local authority.
 - Pipework to be insulated in accordance with the specification and thermal gain is to be kept to a minimum by adequate insulation and separation of cold water services pipework and components from services that can cause transfer of heat.
 - Any provisions for pipework expansion, pipework guides, and/or anchoring shall be determined by the contractor.
 - All low points shall have drain valves. All high points shall be fitted with Automatic Air Units (AAUs).
 - All isolation valves, blending valves and servicing valves are to be located on the pipework within accessible positions.
 - Thermostatic mixing valves are to be supplied complete with integral strainers, full flow check valves and temperature pre-set.
 - In all cases where pipes pass through walls and floors the services contractor shall provide and build in sleeves.
 - The responsibility for the support of the entire pipework system and associated plant shall be that of the contractor.
 - Gaps around services penetrations are to be fire stopped with intumescent mastic sealant.
 - All exposed water services pipework shall be installed in chrome plated pipework or painted copper, to be approved by the Architect.
 - Rigid final connections shall be provided to all water outlets. No flexible hoses shall be used.
 - Any requirement for water hammer arrestors shall be determined by the contractor.
 - Exact location of sanitary ware shall be agreed with the architects prior to installation.
 - All external domestic water services pipework shall be trace heated and insulated to protect against freezing.
 - Refer to domestic distribution schematic for typical connection details.
 - It is the Contractor's responsibility to ensure that the system is provided with sufficient pressure reducing valves to ensure that all outlets are protected from excessive pressure.

REVISIONS

Rev.	Suitable for Review and Comment	Date	Drawn By	Checked	Approved By
P01	Suitable for Review and Comment	13/03/24	AD		GH AH

3rd Floor, Wharton Place
13 Wharton St
Cardiff
CF10 1GS
t: +44(0)2920 023665
e: cardiff@hydrock.com

Hydrock

CLIENT

GWP Architect

PROJECT

Merthyr Synagogue

TITLE

Mechanical Services
Public Health Layout
Lower Ground Floor & Ground Floor

HYDROCK PROJECT NO.
28464

SCALE @ AD
1 : 50

STATUS DESCRIPTION

SUITABLE FOR REVIEW & COMMENT

STATUS
S3

DRAWING NO.

2324-HYD-XX-XX-DR-M-4500

REVISION

P01