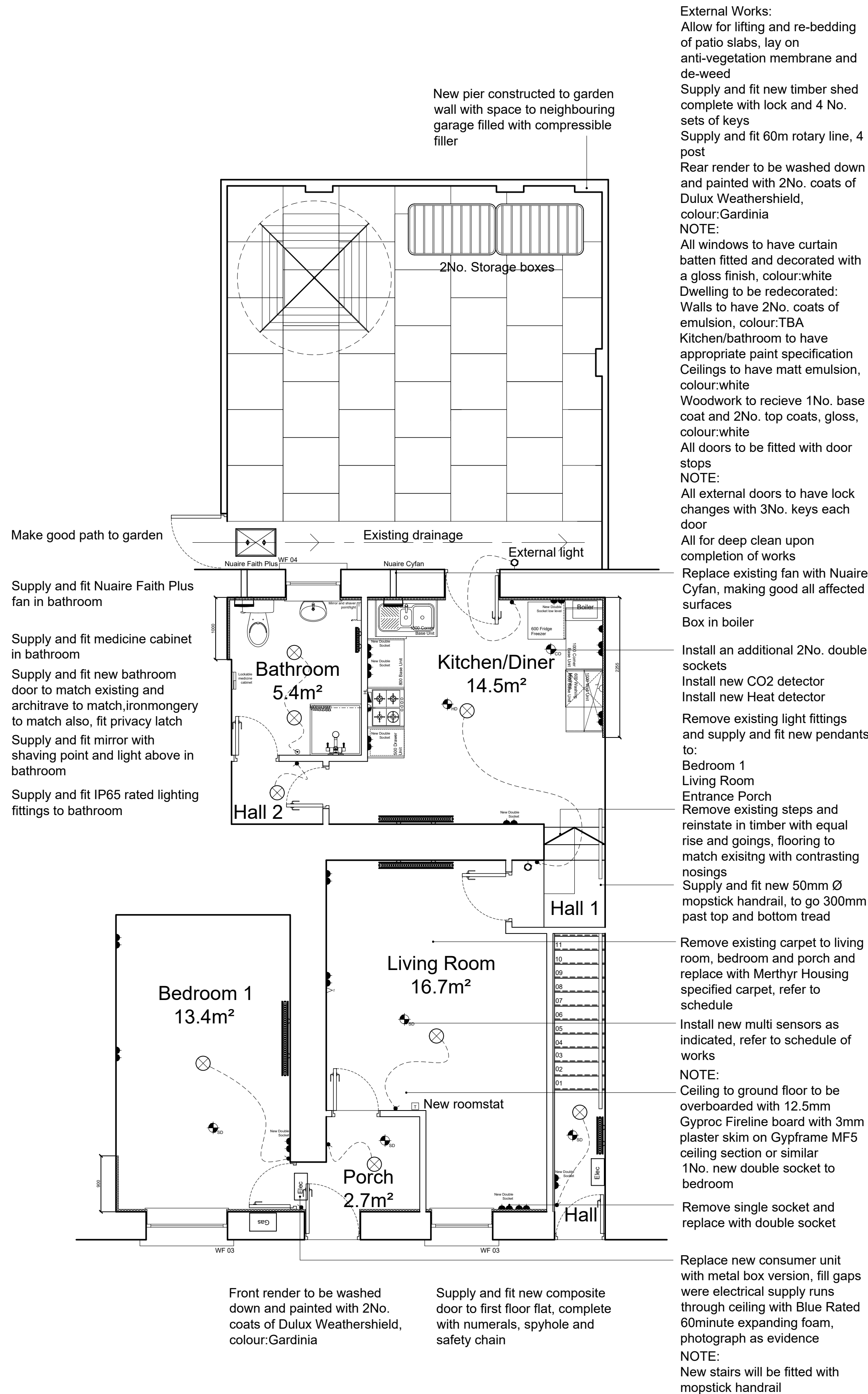


### Electrical Key

	Double Socket
	Single Socket
	Non-switched Single Socket - low level
	Electric cooker outlet
	Pullcord
	Light switch
	Smoke detector
	Heat detector
	Carbon monoxide detector
	Room stat
	Switchable fused spur
	Cooker control with remote connection
	Telephone point
	TV socket
	Passive vent outlet
	Wall mounted light
	Double Socket Low Level
	Gas Bayonet
	Fused spur - high level
	Non Switched single socket
	Electrical supply
	Gas supply
	Lightshaver point
	Shaver point

0 10m  
Scale 1:100



### Ground Plans as Proposed

scale 1:50

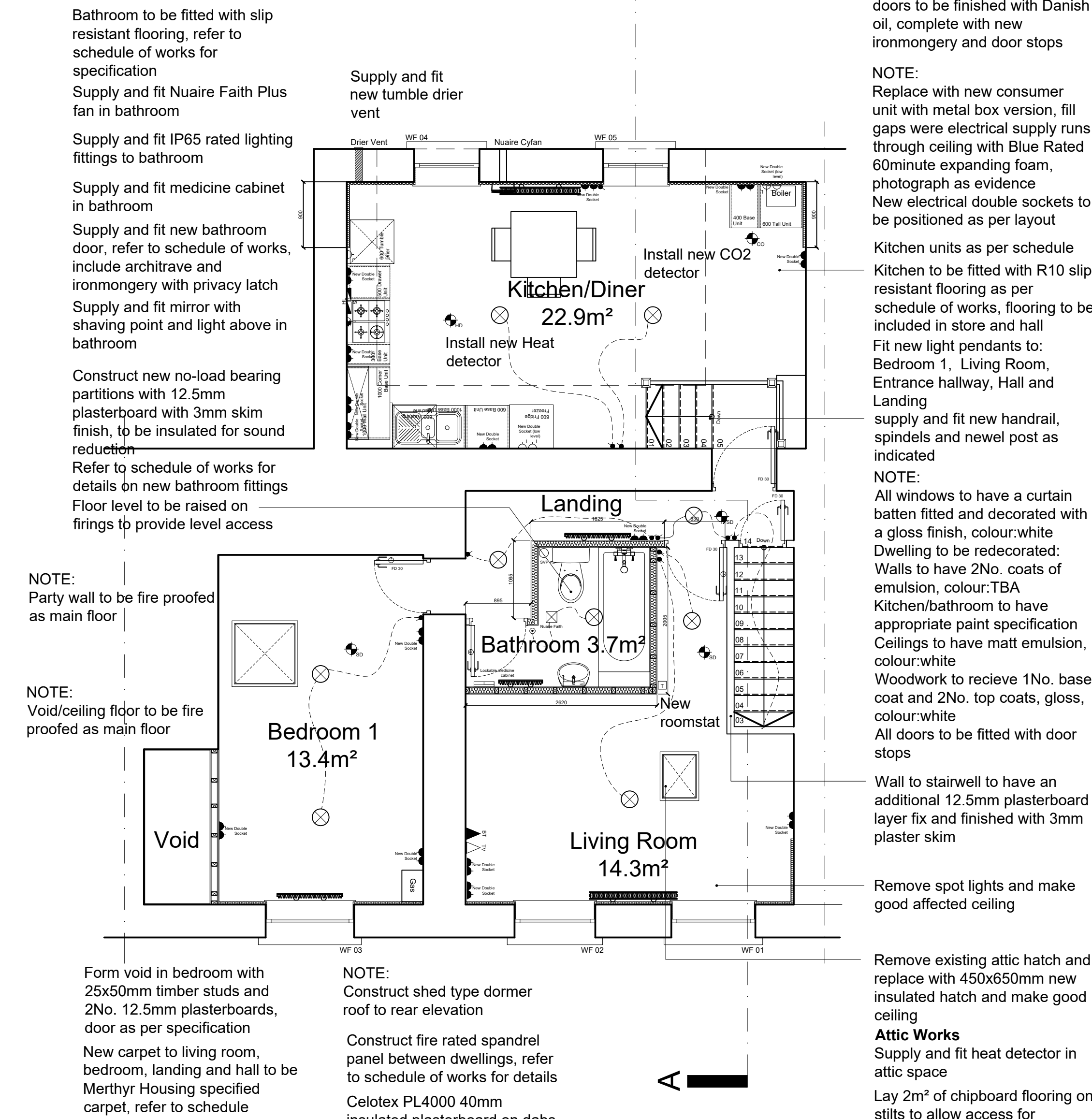
#### Kitchen Schedule

##### Ground Floor Flat

1No. 500 Drawer Unit
1No. 800 Base Unit
1No. 1000 Base Unit
2No. 1000 Wall Units
1No. 600 Tall unit
Total 1.14m <sup>3</sup>

#### Note:

Refer to schedule and employers requirements of works for detailed descriptions of work



### First Floor Plan as Proposed

scale 1:50

#### Kitchen Schedule

##### First Floor Flat

1No. 500 Drawer Unit
1No. 300 Base Unit
1No. 400 Base Unit
1No. 600 Base Unit
2No. 1000 Base Unit
1No. 600 Tall unit
Total 1.28m <sup>3</sup>

#### Radiator Schedule

##### First Floor Flat

Living Room 1	3241 Btu	600x800mm Kudox Type II steel panel radiator
Kitchen	3400 Btu	600x1100mmKudox Type II steel panel radiator
Bathroom	3300 Btu	1100x300mm Elton brushed aluminium towel radiator
Bedroom 1	4200 Btu	600x1200mm Type II steel panel radiator
Landing	840 Btu	400x600mm Type 11 single panel radiator
Hall	2561 Btu	700x700mm Stelrad Classic K1

B	External stair/first floor removed door removed, window installed as Proposed	17/10/25
A	Section line and external stair outline added	03/10/25

Revision	Description	Date
----------	-------------	------

### Merthyr Tydfil Housing Association

Title General Arrangements - as Proposed
Project 54 High Street, Dowlais Top, Merthyr Tydfil, CF46 3PW

Drawn by PTB	Checked -	Status Planning
Drawing Number HIS054/A/002	Revision B	Scale 1:50 @ A1 Date 18/08/2025