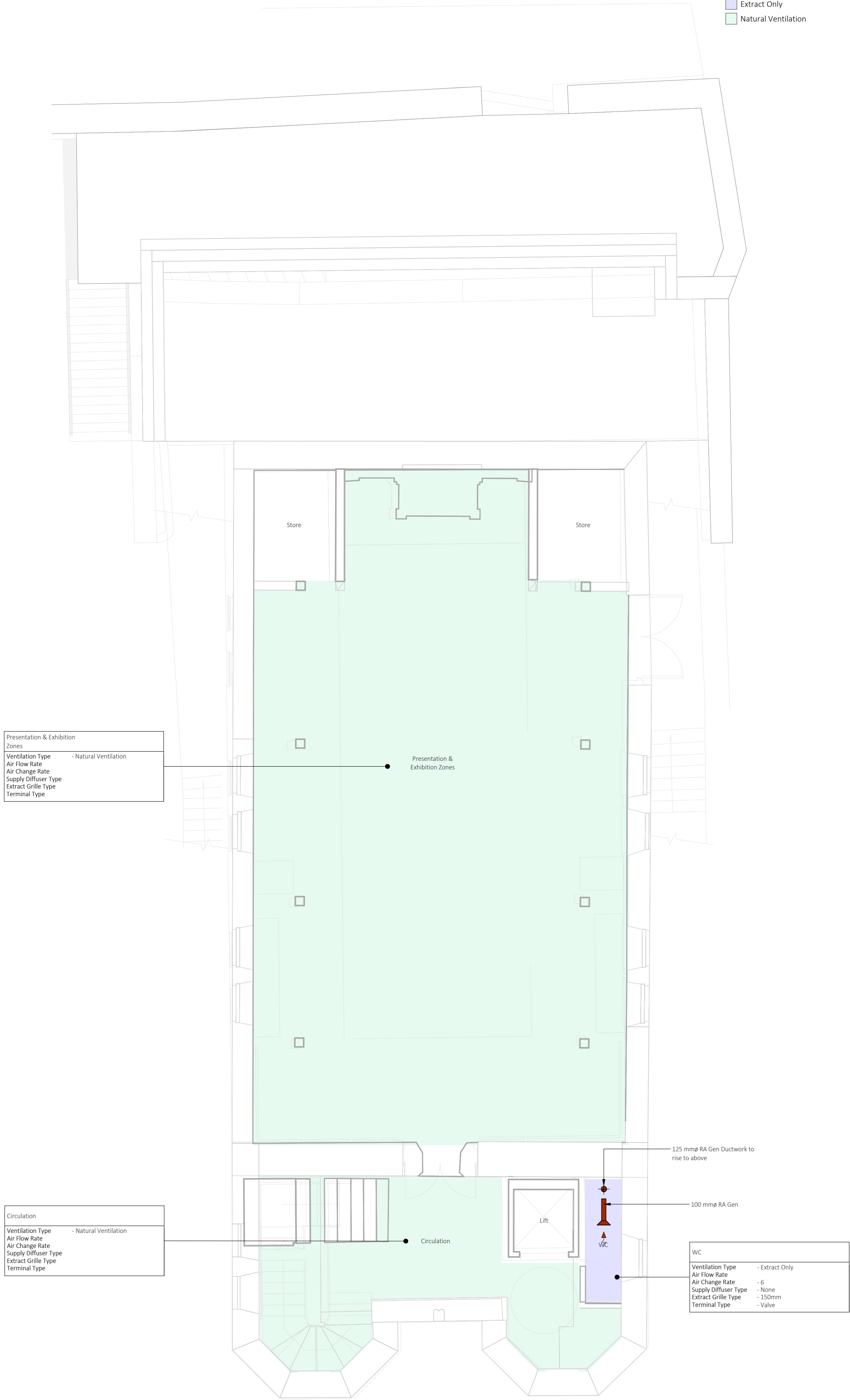


C:\Users\jameshobbs\Documents\2324-HYD-XX-DR-M-3501_2.dwg (xref:2324-HYD-XX-DR-M-3501_2.dwg)

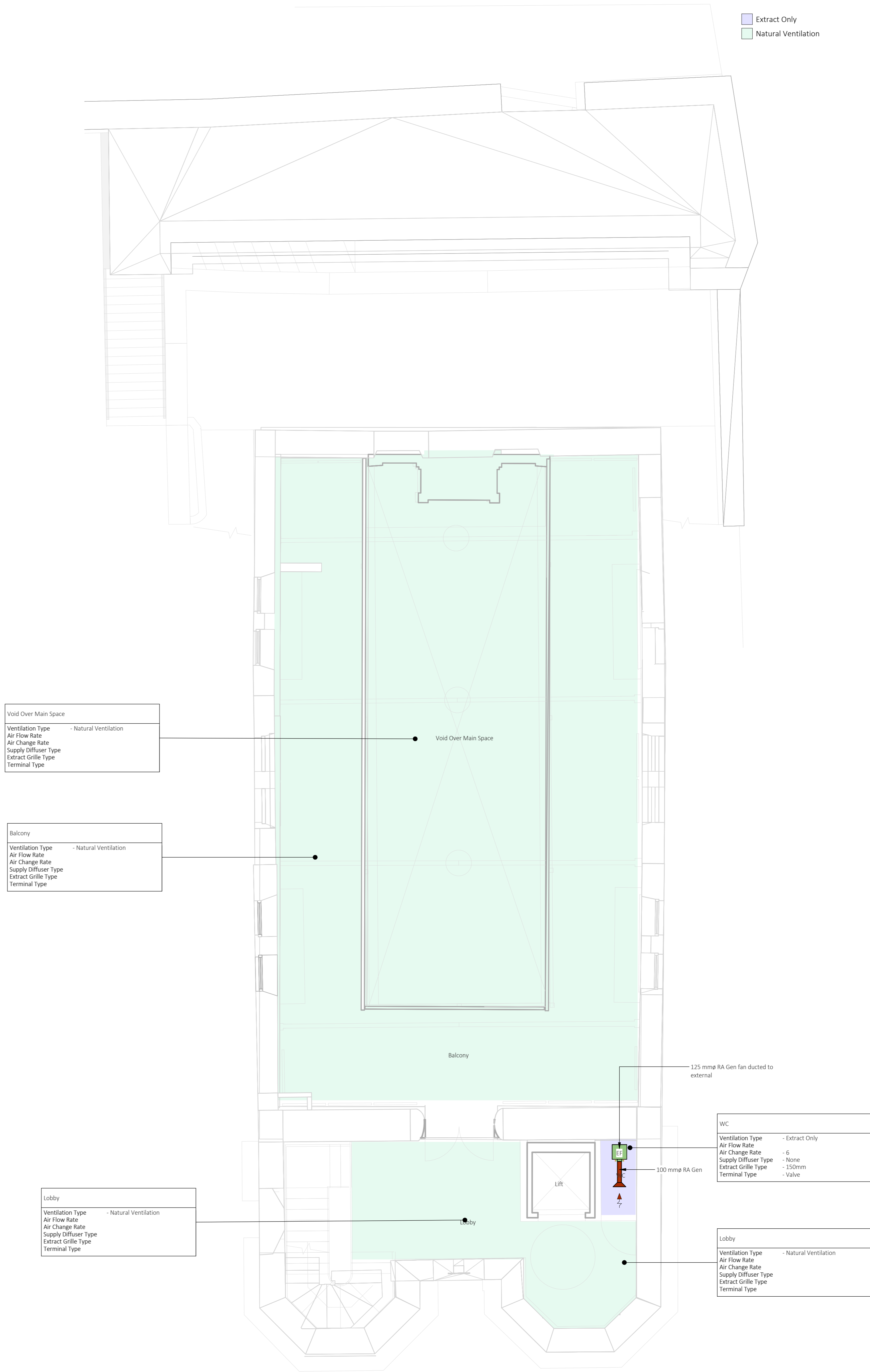
VENTILATION STRATEGY

- Extract Only
- Natural Ventilation

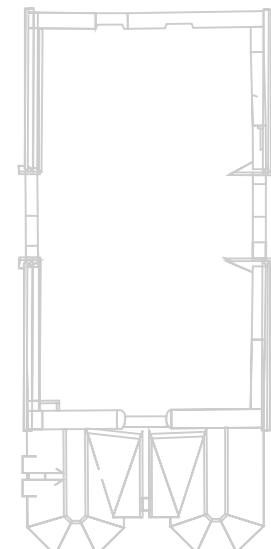


VENTILATION STRATEGY

- Extract Only
- Natural Ventilation



KEY PLAN



NOTES

- All dimensions are to be checked on site before the commencement of works. Any discrepancies are to be reported to the Architect & Engineer for verification. Figure dimensions only are to be taken from this drawing.
- This drawing is to be read in conjunction with all relevant engineers' and service engineers' drawings and specifications. This drawing is copyright.
- General installation to comply with HVCA DW144.
- Access panels for inspection purposes shall be provided and installed in accordance with TR19.
- Ventilation installation to comply with BS 5588 : Part 9:1999.
- Attenuators to be selected by contractor upon confirmation of fan selections. The contractor shall ensure the attenuators selected meet the NR criteria as specified in the relevant schedules.
- Fire / smoke dampers to be provided in association with the architect's fire strategy drawing. Access panels to be provided for access to reset and maintain damper as required.
- Fire dampers to incorporate external indicator fitted to the access (cassette) side of the damper casing giving visual indication of damper blade position.
- Flexible ductwork lengths shall not exceed 500mm and shall not be used for changes of direction.
- The responsibility for the support of the entire ductwork system and associated plant shall be that of the contractor.
- All ductwork and plenums to be fully insulated, unless stated otherwise within the specification.
- All dampers shall be of the opposed blade configuration.
- Final connections to grilles / diffusers to be made with acoustic flexible ductwork.
- Louvers to be fitted with insulated plenum boxes.
- Ducts to transform and connect to plenum boxes.
- VCDs shall be included on all final duct branches leading up to grilles / diffusers.
- For final louvre locations refer to Architectural layouts and elevations.
- All doors separating rooms with a flow differential are to be provided with means of suitable air transfer to ensure unimpeded door operation.

REVISIONS

Rev.	Revision Description	Date	Drawn By	Checked	Approved By
P01	Suitable for Review and Comment	13/03/24	AD		GH AH

Hydrock

3rd Floor, Wharton Place
Cardiff
CF10 1GS
T: +44(0)2920 023665
e: cardiff@hydrock.com

CLIENT

GWP Architect

PROJECT

Merthyr Synagogue

TITLE

Mechanical Services
Ventilation Layout
First Floor & Second Floor

HYDROCK PROJECT NO. 28464	SCALE @ AD 1 : 50	STATUS S3
STATUS DESCRIPTION SUITABLE FOR REVIEW & COMMENT	DRAWING NO. 2324-HYD-XX-XX-DR-M-3501	REVISION P01