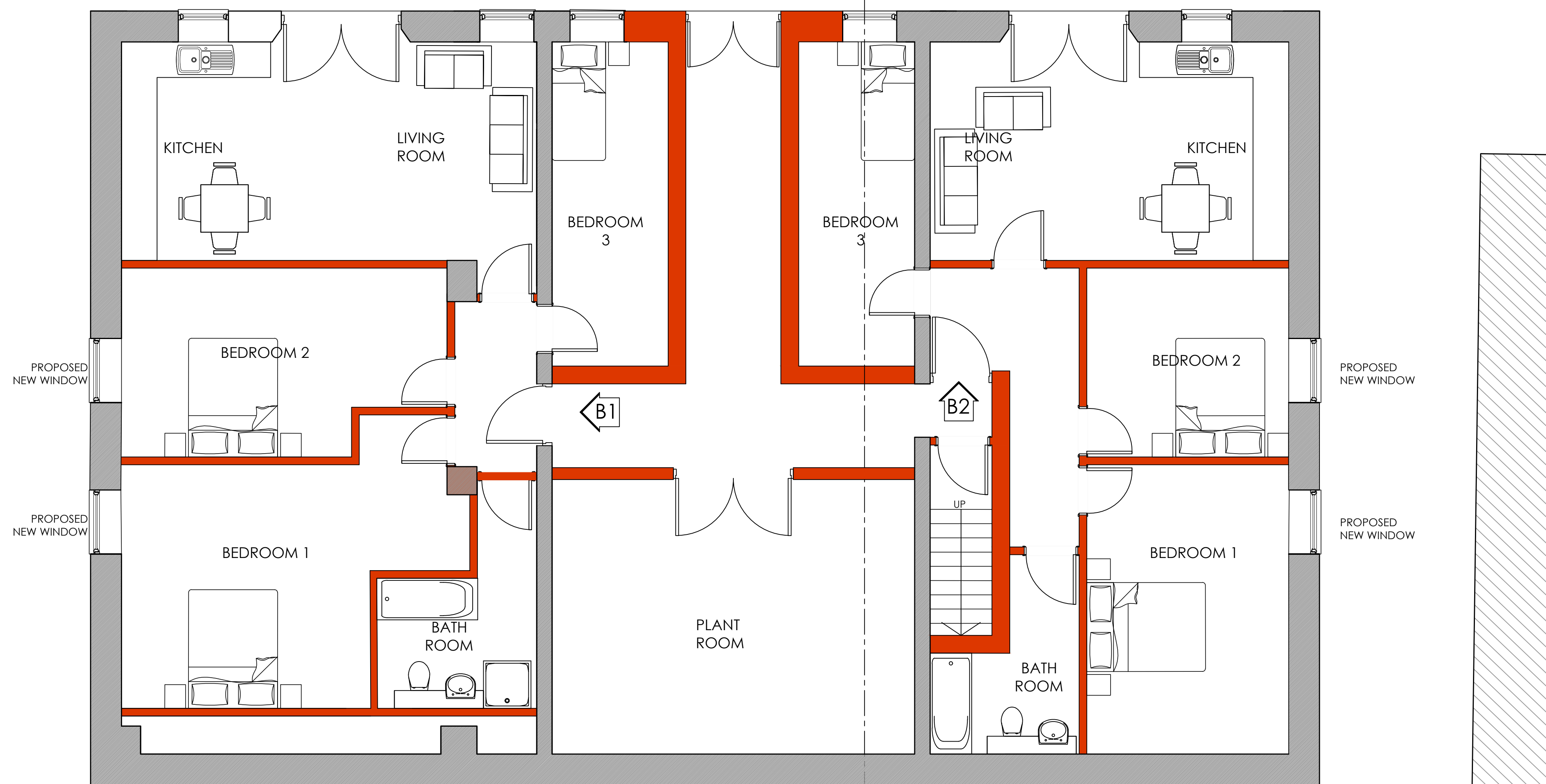


GROUND FLOOR PLAN AS PROPOSED




BASEMENT PLAN AS PROPOSED

SCHEDULE OF ACCOMMODATION				
BASEMENT			Sq. M	Sq.Ft
B1	APARTMENT	2 BEDROOMS	90.7	976.3
B2	APARTMENT	2 BEDROOMS	84.7	911.7
	PLANT ROOM		28.0	301.4
3	TOTAL		203.4	2189.4
GROUND FLOOR				
G1	APARTMENT	2 BEDROOMS	75.0	807.3
G2	APARTMENT	2 BEDROOMS	66.0	710.4
G3	APARTMENT	2 BEDROOMS	68.0	731.9
3	TOTAL		209.0	2249.7
FIRST FLOOR				
F1	APARTMENT	3 BEDROOMS	66.0	710.4
F2	APARTMENT	2 BEDROOMS	70.0	753.5
F3	APARTMENT	2 BEDROOMS	64.0	688.9
3	TOTAL		200.0	2152.8
SECOND FLOOR				
S1	APARTMENT	2 BEDROOMS	64.0	688.9
S2	APARTMENT	3 BEDROOMS	75.0	807.3
2	TOTAL		139.0	1496.2
TOTAL NETT FLOOR AREA			751.4	8088.0
TOTAL NO. OF APARTMENTS			10	

ISSUED FOR:

PLANNING APPLICATION ISSUE

 **Creation Design**

Creation Design - Wales

Tel: 01495 616277 / 07508890294

www.creationdesign-wales.com

E-mail: info@creationdesign-wales.com

PROPOSED FLAT CONVERSION

FORMER SALVATION ARMY BUILDING

6-8 PERROTT STREET

TREHARRIS

CF46 5ET

BASEMENT & GROUND FLOOR PLANS

DATE:	March 2025	DRAWN BY:	P.P.
SCALE(S):	1:50 @ Size A1	DRAWING NO.:	25-013/P/04
		REV.:	A